

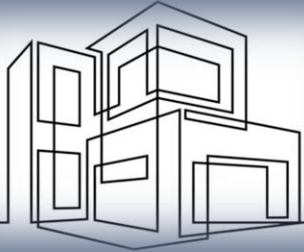
# ROYAL NEST



*GERGI CHAGHOURY*



# DISCOVER THE PROJECT



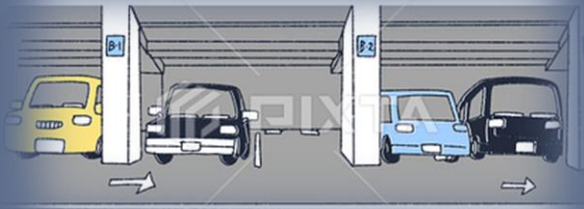
**6 BUILDINGS**



**24 HOURS  
SECURITY**



**41  
APARTMENTS**



**UNDERGROUND  
PARKING**



**4 MINUTES  
FROM  
HIGHWAY  
FEYTROUN**



**MOUNTAIN  
VIEW**

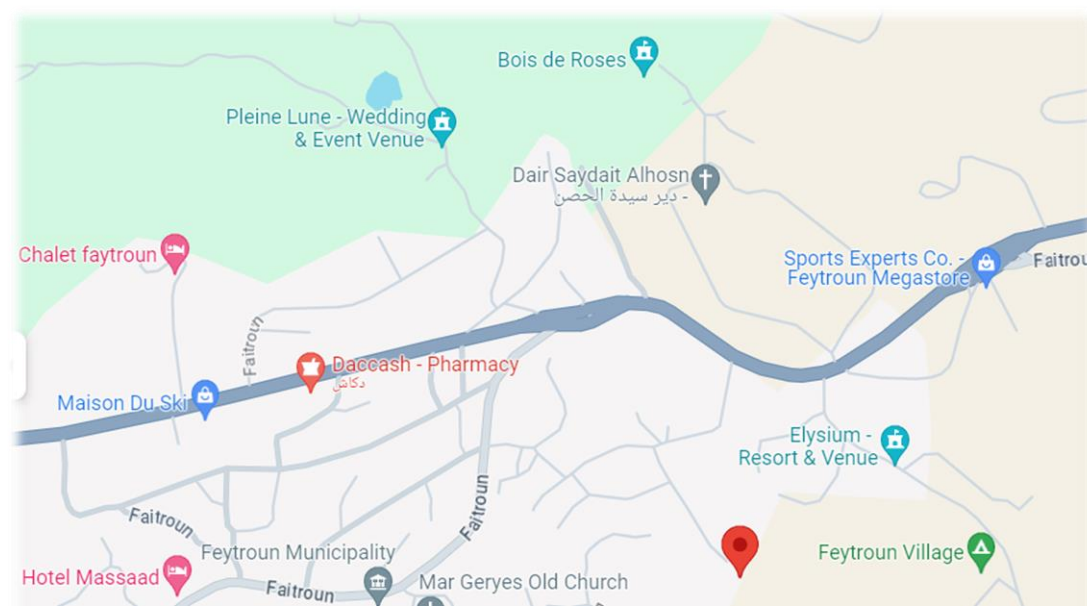
Creating a special service for Housekeeping, Rentals, maintenance, and caretaking for your property.

# FEATURES

*Project includes advanced Solar Power, Amazing modern Architecture design, lots of floor to ceiling windows, secure entrance door, fingerprint entry, easy access for AirBnB rentals.*

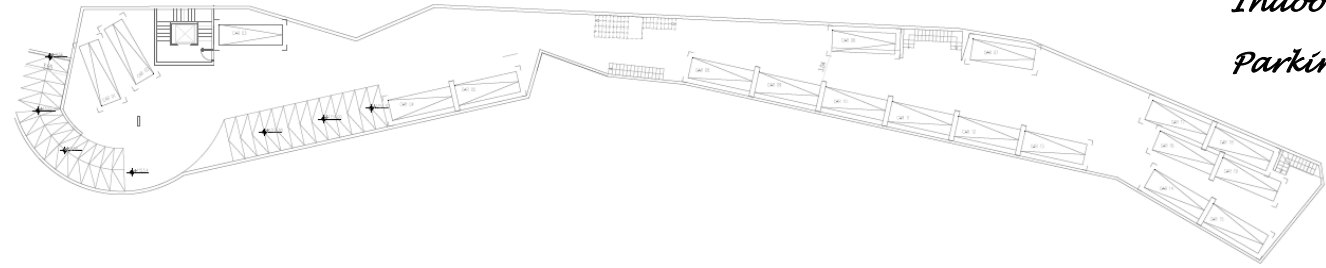
*Owners will have access to an extensive concierge services from housekeeping to full makeover making the property very easy to manage remotely.*

*Kitchens with resin countertops, ceramic flooring, sanitary fixtures with built-in cistern.*

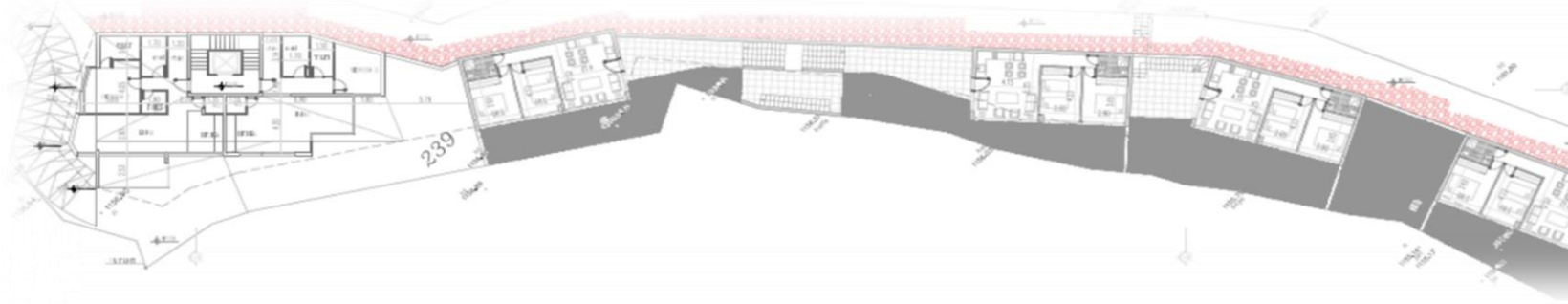


***The Project is located at Feytroun village 4 minutes from highway connecting the city to the mountains. Due to its location, it is an all-season getaway.***

TWO BASEMENTS UNDER THE VILLA AND THE BUGALOWS SERVE AS UNDERGROUND PARKING FOR THE PROJECT.



*Indoor  
Parking*



**TOWER**

**VILLA**

**BUNGALOWS**

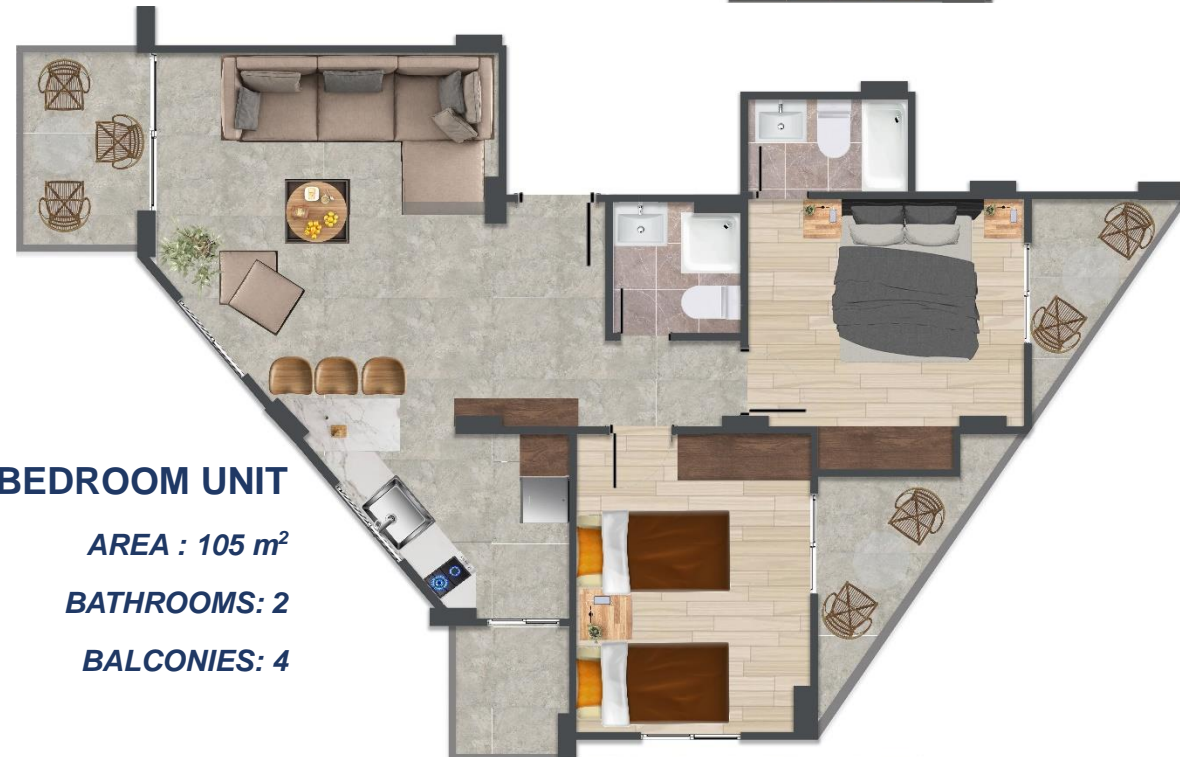




***THE PROJECT IS SURROUNDED BY EXTINGUISHED MOUNTAIN VIEW FROM THE BACK AND A WIDE LAND VIEW ON THE FRONT***

# TOWER UNITS

AREA/ LEVEL	3 BEDROOMS	2 BEDROOMS	1 BEDROOM
5	152 m2	RESERVED	
4	152 m2	105 m2	
3	SOLD	105 m2	
2	SOLD	105 m2	
1	152 m2	SOLD	SOLD
GF	Sales and Services office	SOLD	
Rez de jardin	161 m2	125 m2	
Garden		100 m2	





AREA/ LEVEL	Tower side		Bungalow side	
	Int	Ext	Int	Ext
Penthouse	160.5	25		
First Floor	96		91	
Road Level	103	21	100	26
Terrasse Level	96		91	
Garden Level	115	55	115	71

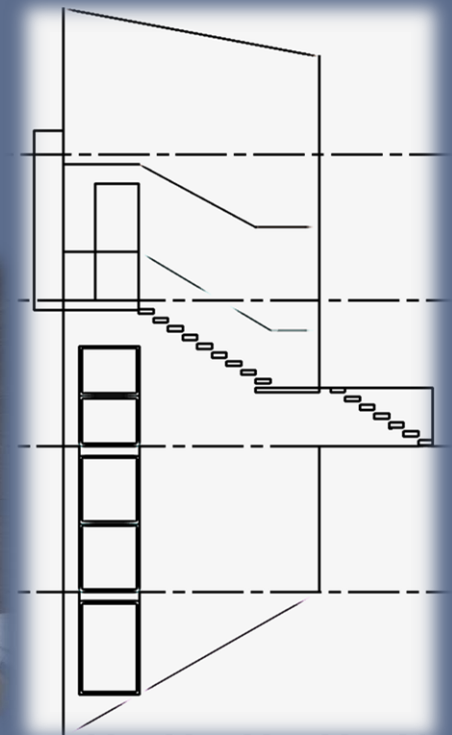
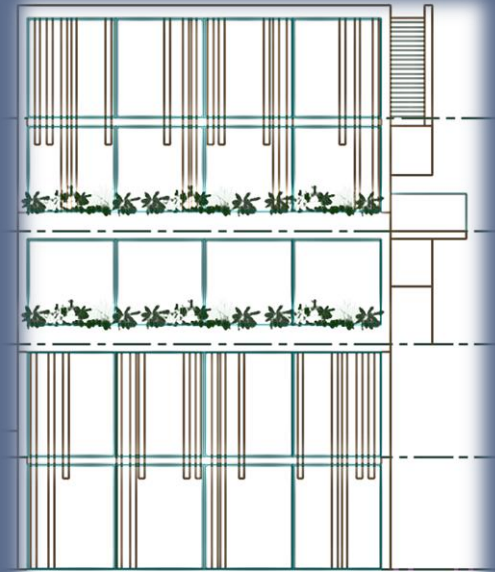
**VILLA**



# ***BUNGALOWS***







**BUNGALOWS GARDEN/TERRASSE ZONING**

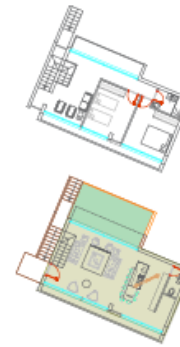
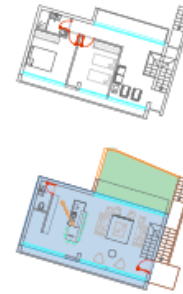
**BUNGALOW 1**

**BUNGALOW 2**

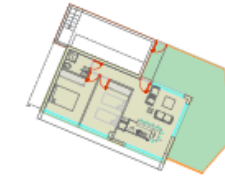
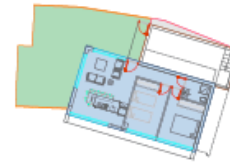
**BUNGALOW 3**

**BUNGALOW 4**

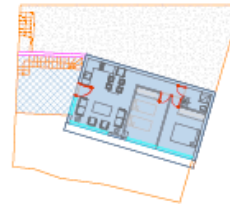
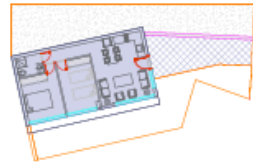
**DUPLEX  
LEVEL  
(GARDEN)**



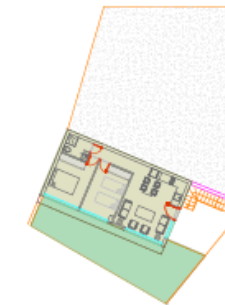
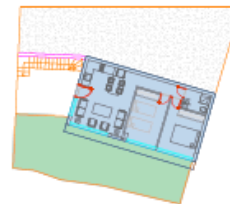
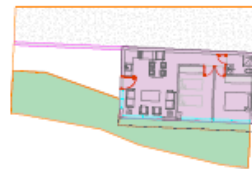
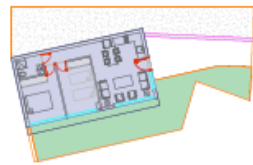
**ROAD  
LEVEL**



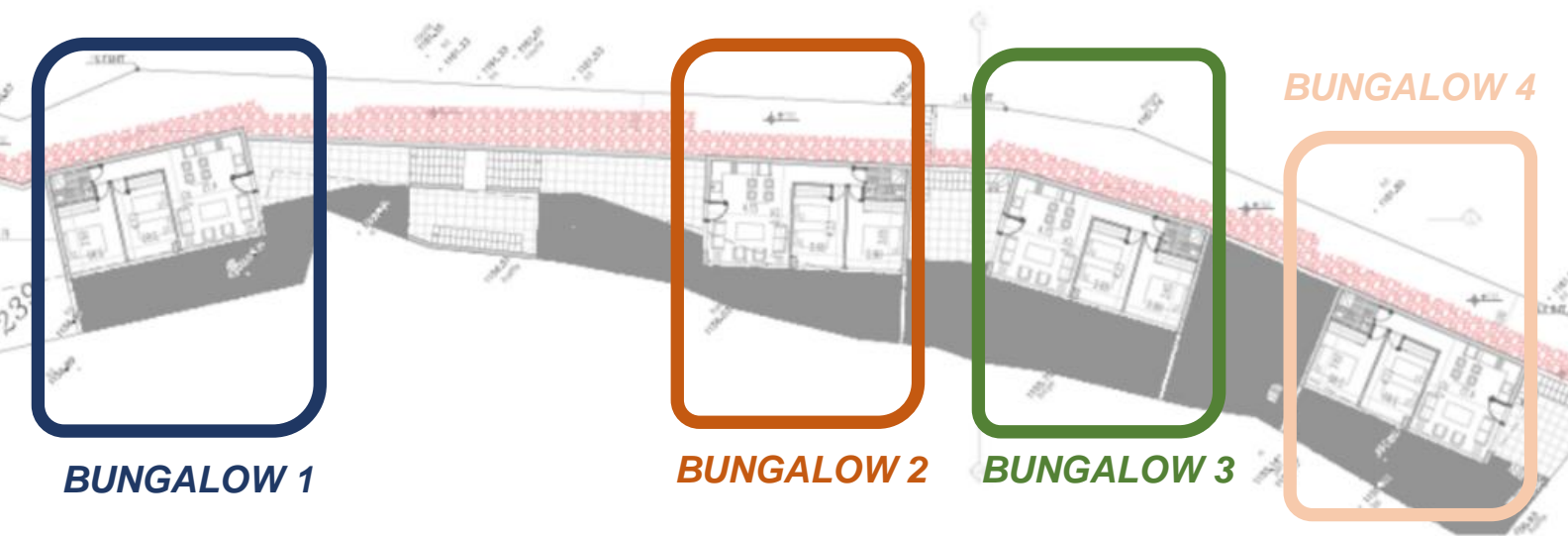
**TERRASSE  
LEVEL**



**GARDEN  
LEVEL**



# BUNGALOWS



**BUNGALOW 1**

**BUNGALOW 2**

**BUNGALOW 3**

**BUNGALOW 4**

BUNGALOW 1		
LEVEL/AREA	Total	EXT
Duplex	137	45
Road	97	78
Terrasse	84	24
Garden	99	84

BUNGALOW 2		
LEVEL/AREA	Total	EXT
Duplex	137	45
Road	97	78
Terrasse	84	24
Garden	99	84

BUNGALOW 3		
LEVEL/AREA	Total	EXT
Duplex	137	45
Road	97	78
Terrasse	83	22
Garden	99	84

BUNGALOW 4		
LEVEL/AREA	Total	EXT
Duplex	137	45
Road	97	78
Terrasse	83	22
Garden	SOLD	



TYPICAL  
GARDEN/  
TERRASSE/  
ROAD  
LEVEL

